



Rynek akcji

Przegląd Rynków Zagranicznych

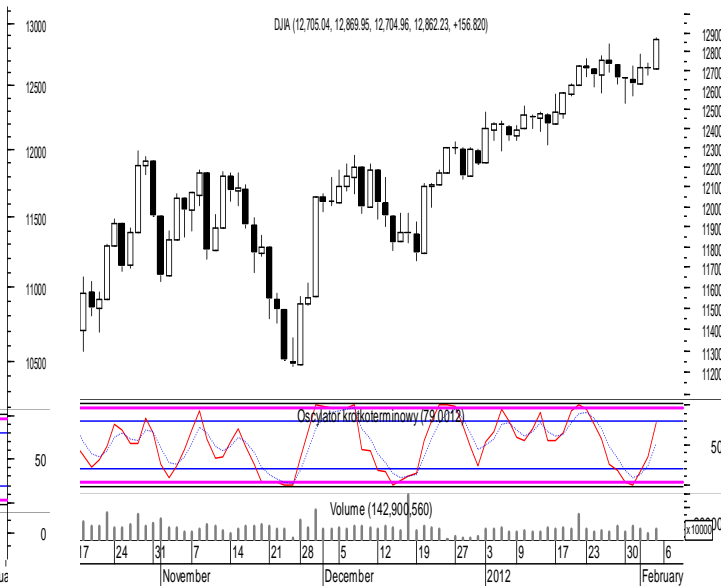
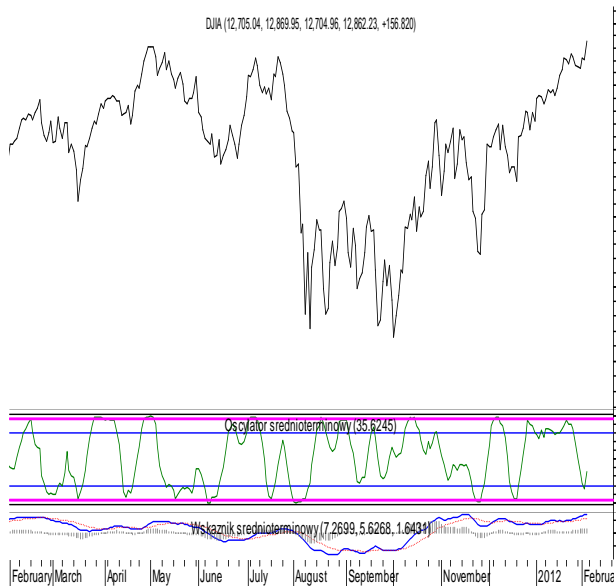
Analiza Techniczna

Sesja z dnia: 3 lutego 2012 r.

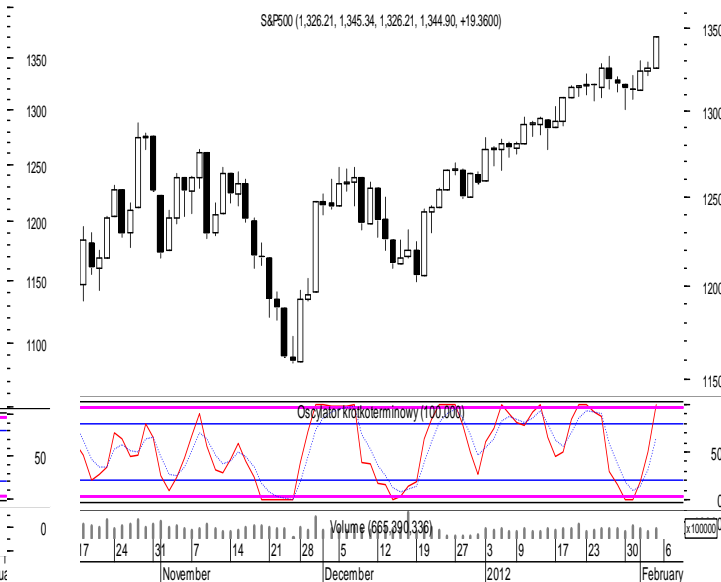
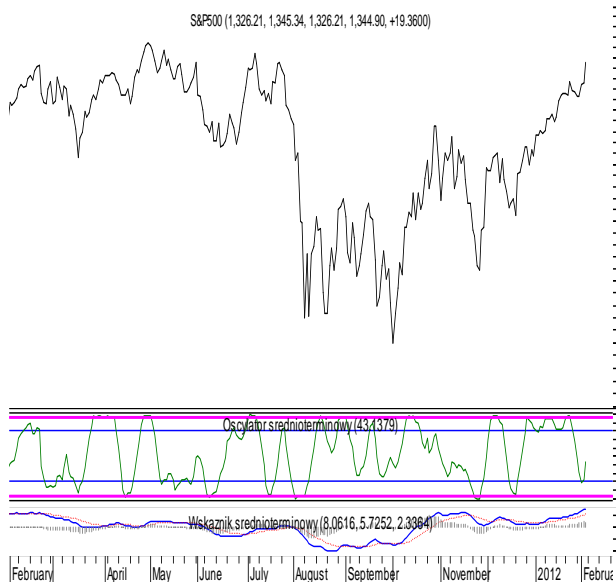
Indeks	Otwarcie	Maksimum	Minimum	Zamknięcie	Zmiana
DJIA	12 705,04	12 869,95	12 704,96	12 862,23	1,23%
S&P 500	1 326,21	1 345,34	1 326,21	1 344,90	1,46%
NASDAQ	2 888,95	2 908,13	2 885,84	2 905,66	1,61%
DAX	6 649,57	6 767,46	6 635,63	6 766,67	1,67%
CAC 40	3 370,63	3 427,92	3 361,18	3 427,92	1,52%
FTSE 100	5 796,07	5 901,07	5 784,23	5 901,07	1,81%
WIG20	2 368,73	2 397,61	2 362,07	2 374,47	0,14%
BUX	19 235,35	19 706,19	19 292,59	19 665,68	0,74%
PX	994,40	1 010,70	990,90	1 009,80	1,14%
RTS1	2 299,02	2 337,26	2 286,40	2 336,07	1,37%
SOFIX	317,10	318,05	315,57	317,73	0,20%
BET10	4 929,67	5 036,58	4 928,87	5 004,48	1,52%
XU100	59 872,21	60 442,83	59 628,99	60 147,96	0,16%
BETELES	135,81	137,56	135,81	137,55	1,36%
NIKKEI	8 849,17	8 877,57	8 825,98	8 831,93	-0,51%
SHCOMP	2 306,66	2 336,27	2 300,98	2 330,41	0,77%
Miedź	8 345,25	8 598,50	8 318,00	8 565,00	2,64%
Ropa	111,78	114,28	111,51	114,28	2,06%
PLN/USD	3,1872	3,1996	3,1580	3,1714	-0,50%
PLN/EUR	4,1890	4,2019	4,1634	4,1733	-0,37%
EUR/USD	1,3144	1,3206	1,3066	1,3158	0,11%
USBonds10	1,8212	1,9540	1,8089	1,9224	5,56%
GRBonds10	1,8620	1,9450	1,8160	1,9330	4,37%
PLBonds10	5,5390	5,5690	5,5380	5,5410	0,11%

Źródło: Bloomberg

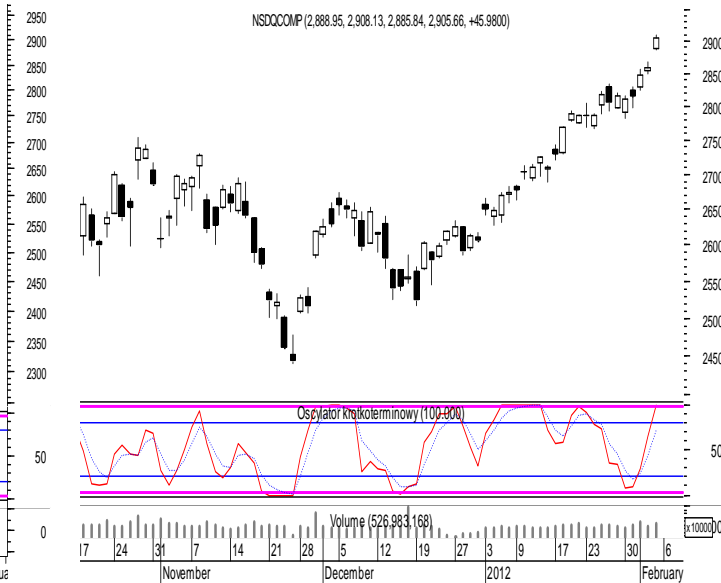
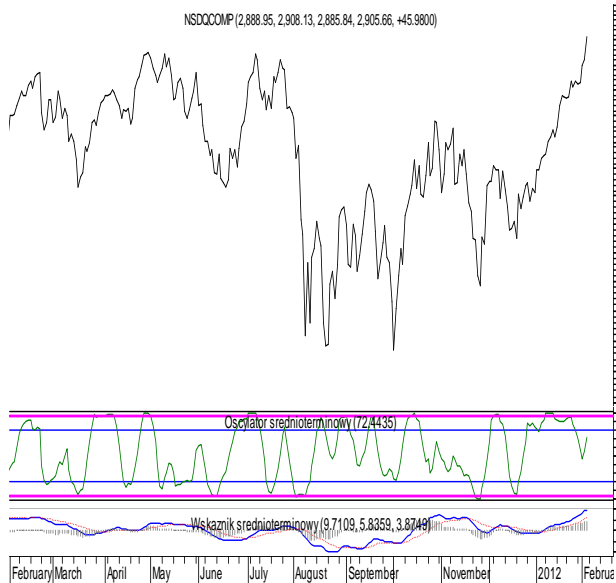
DJIA



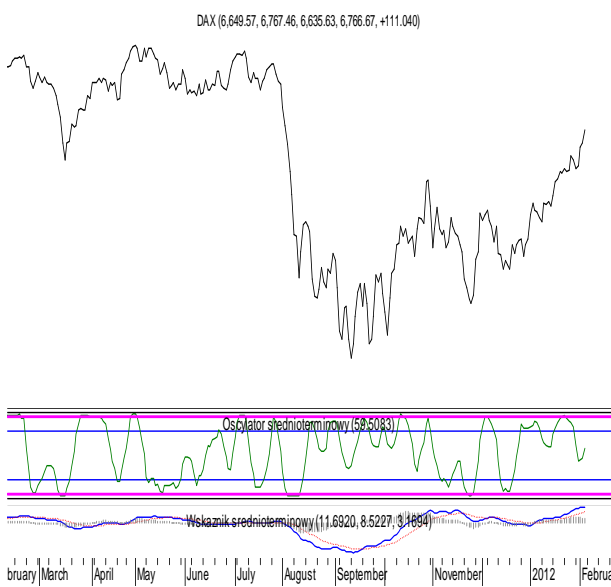
S&P 500



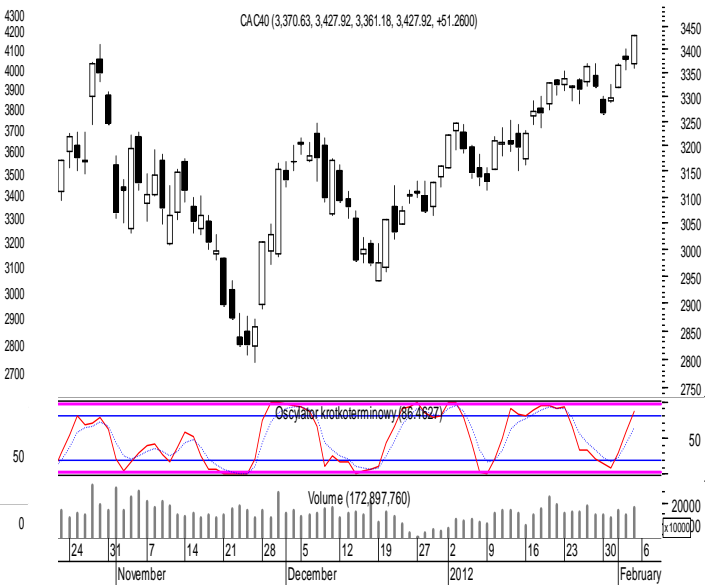
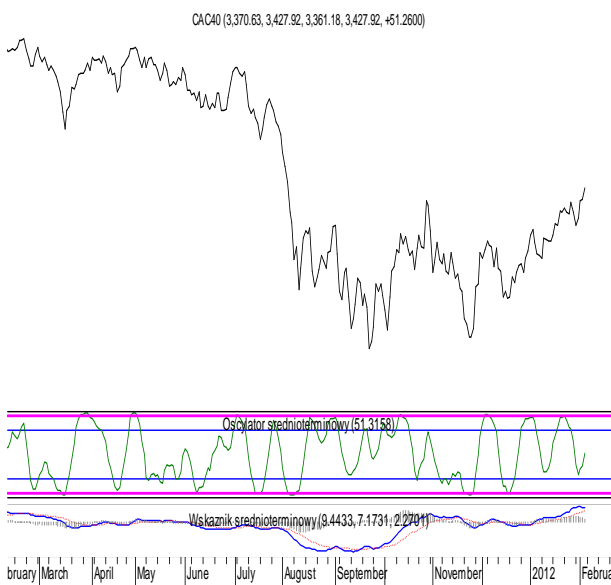
NASDAQ



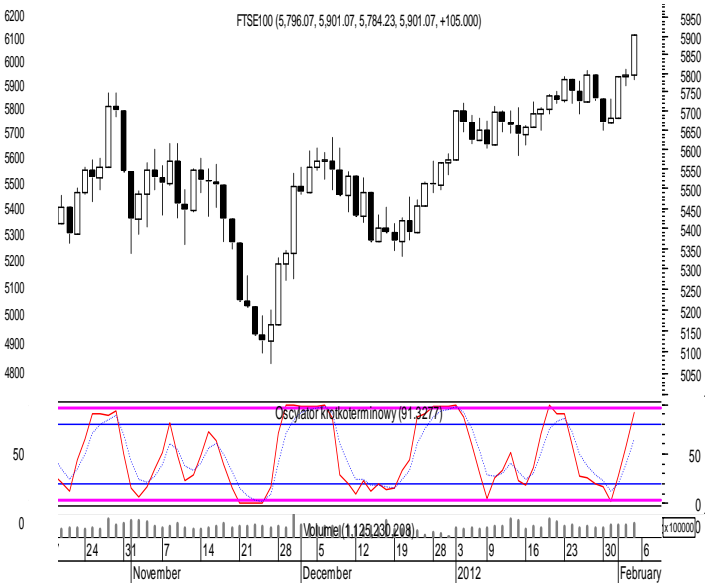
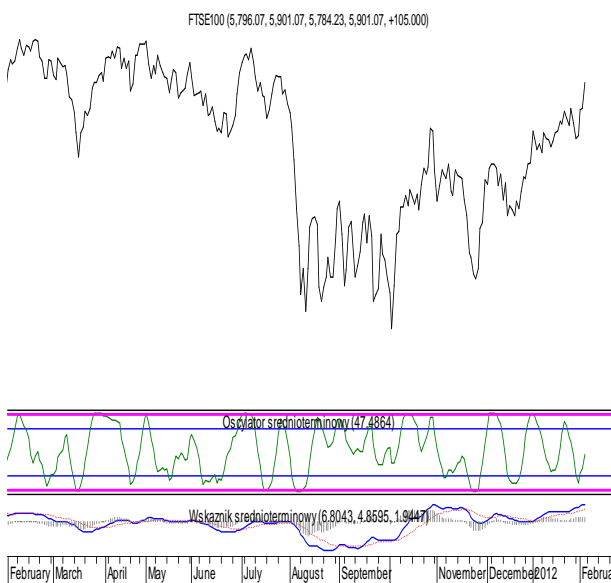
DAX



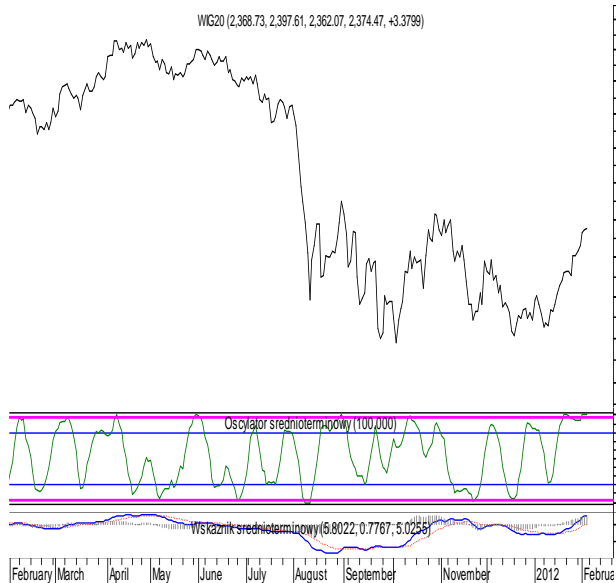
CAC 40



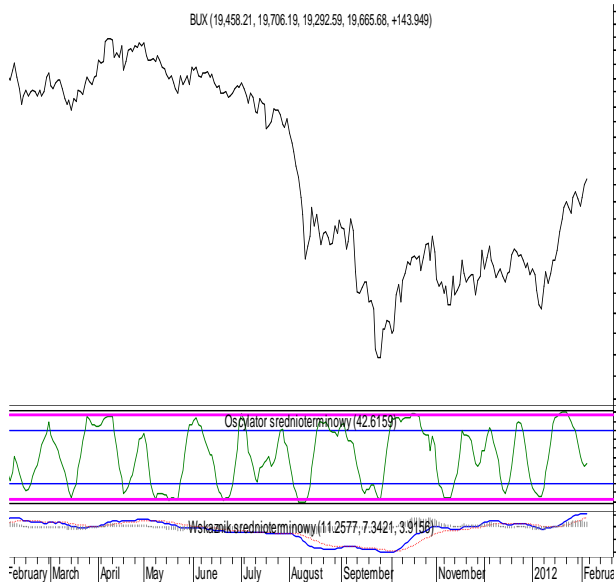
FTSE 100



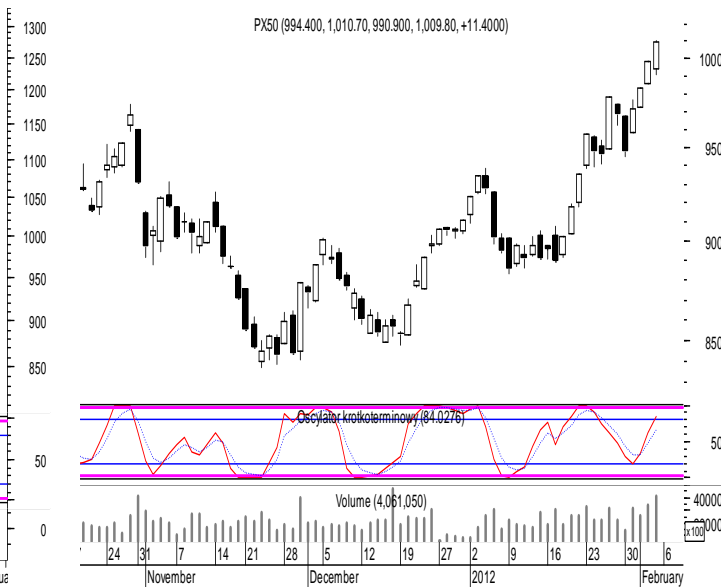
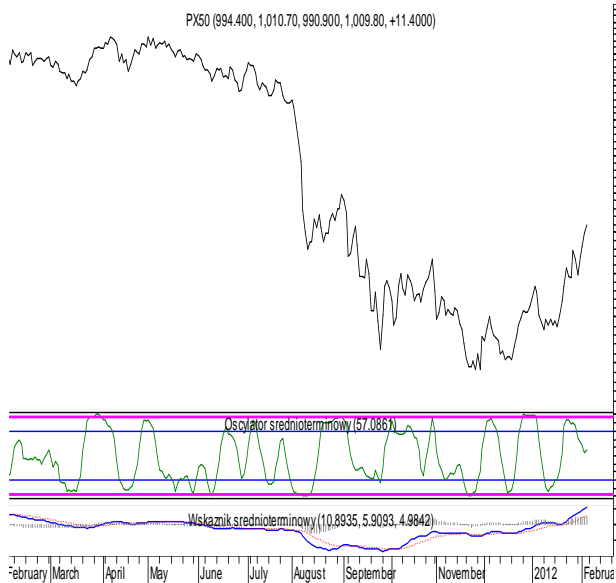
WIG 20



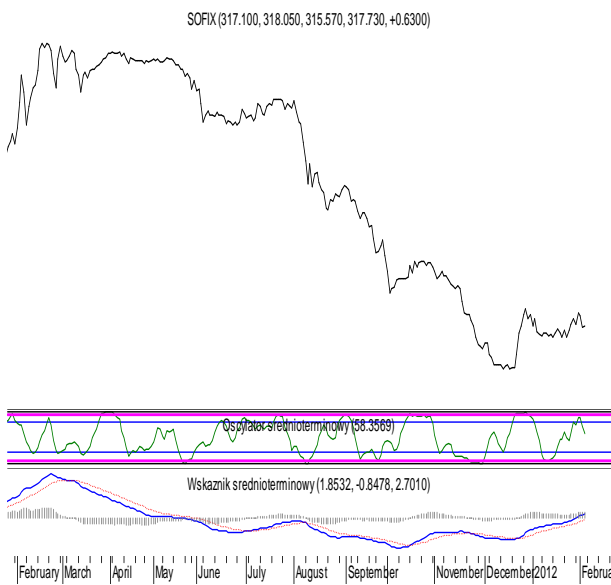
BUX



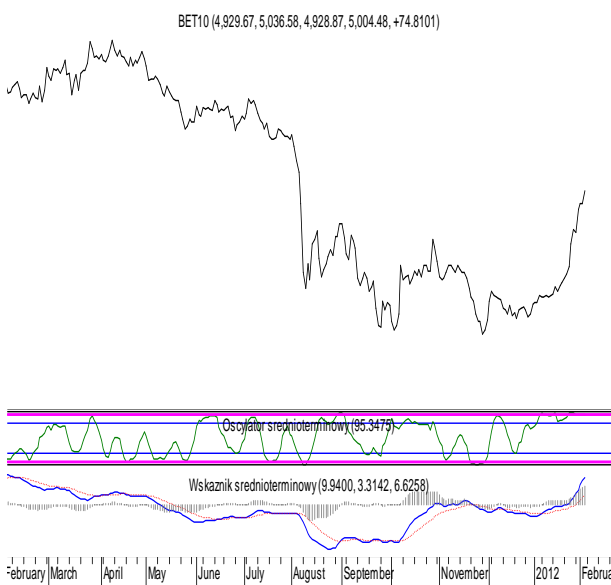
PX



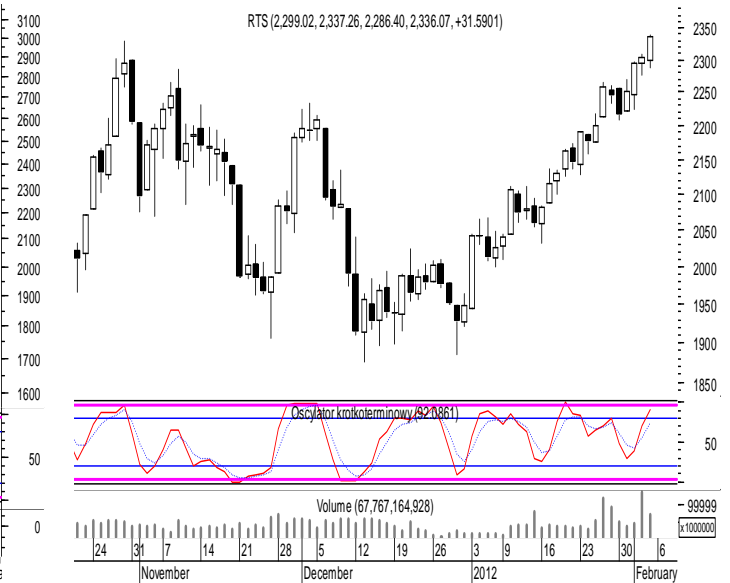
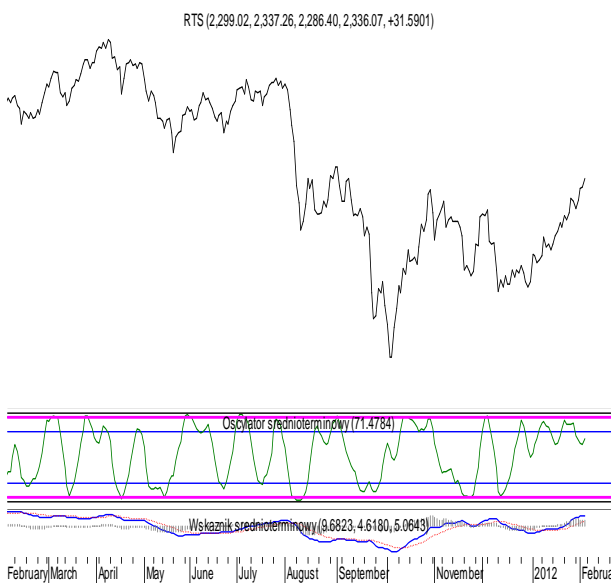
SOFIX



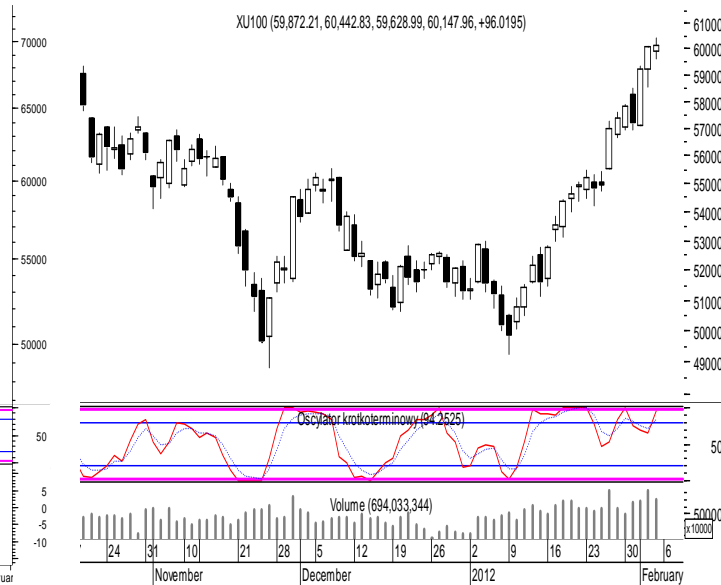
BET10



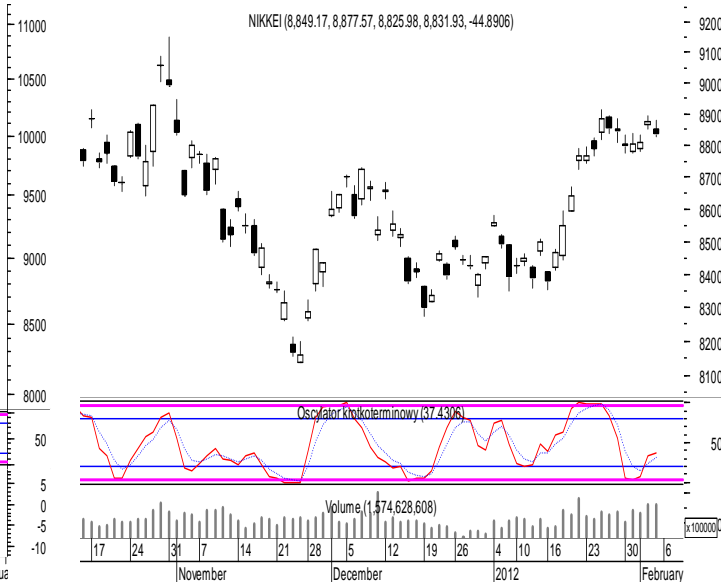
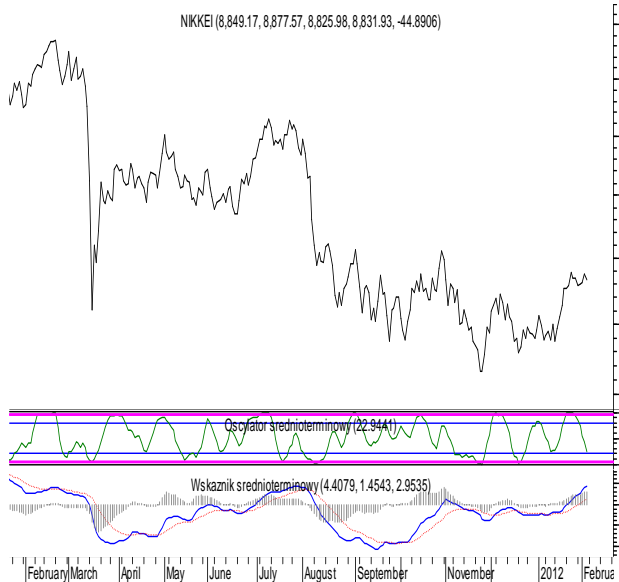
RTX



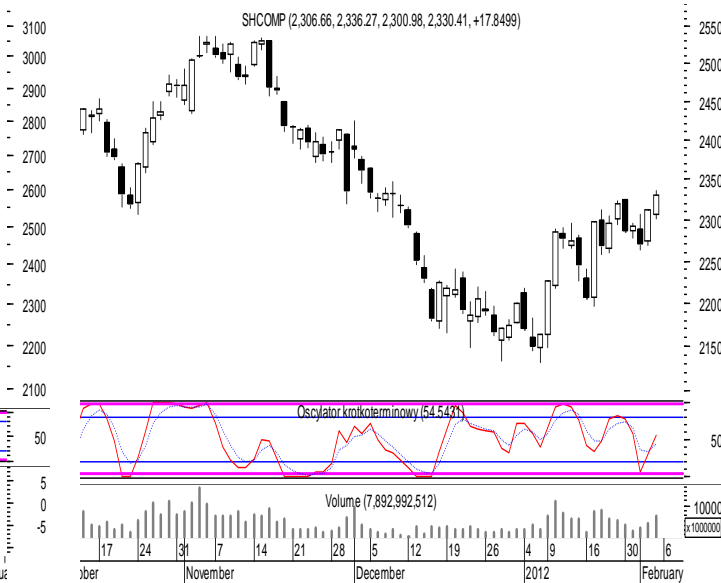
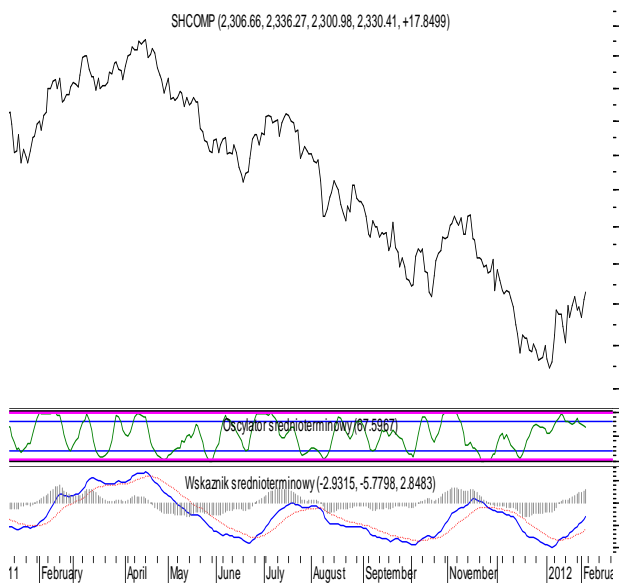
ISE 100



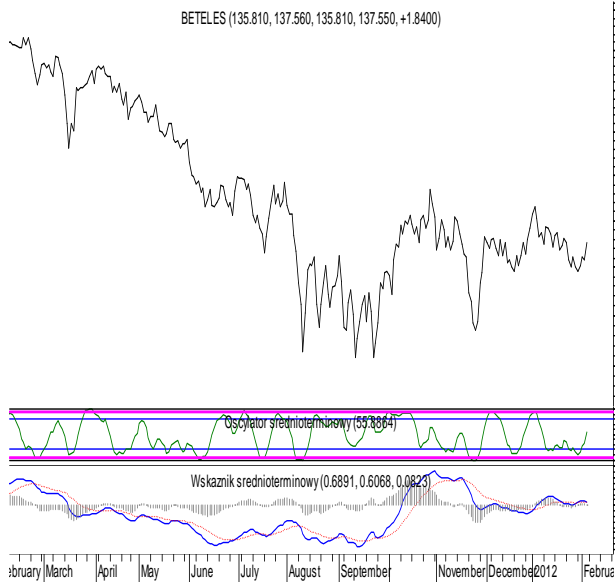
NIKKEI



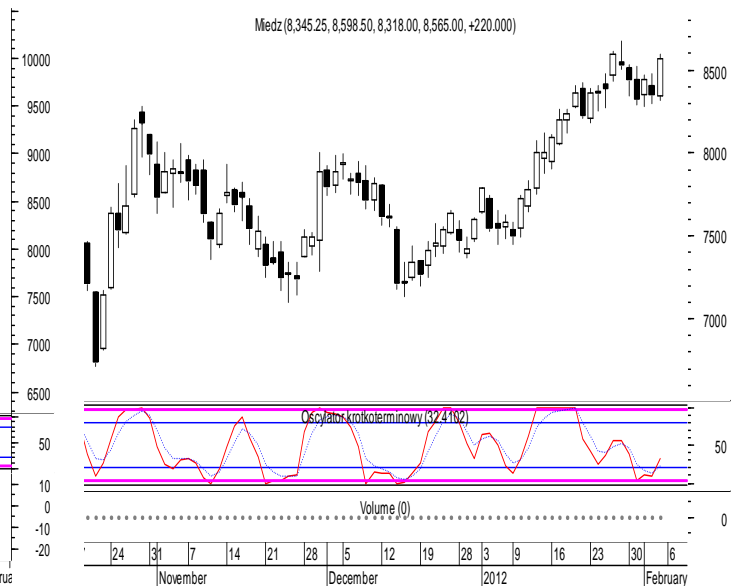
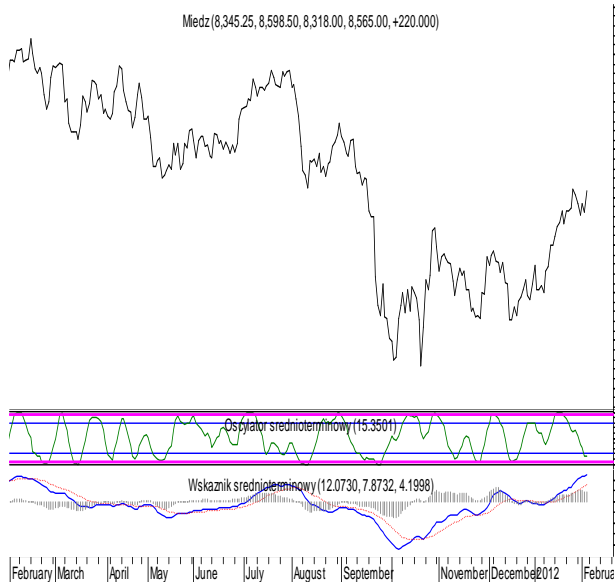
SHCOMP



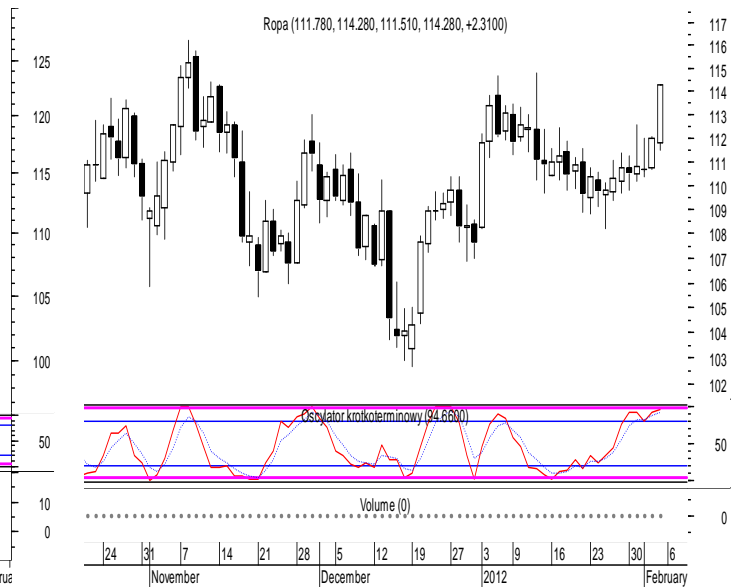
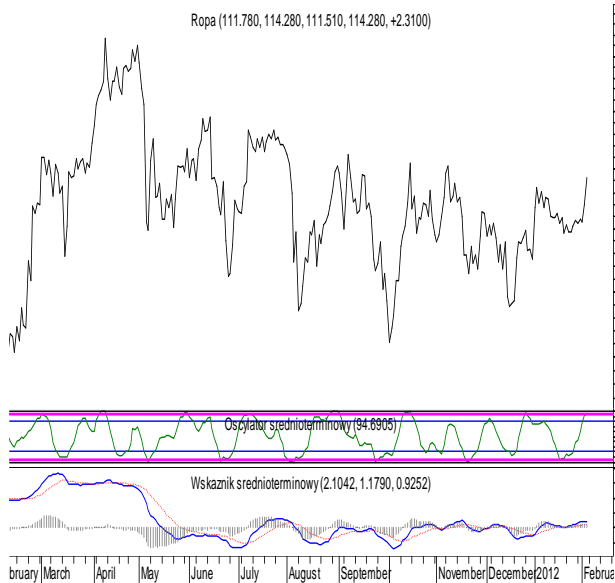
BETELES



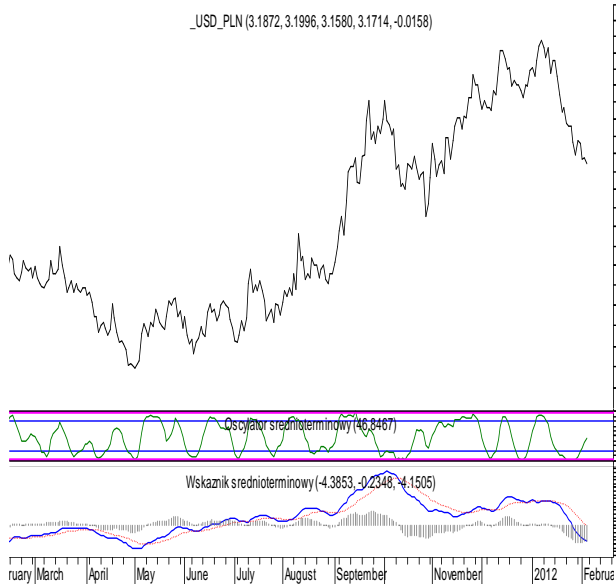
MIEDŹ



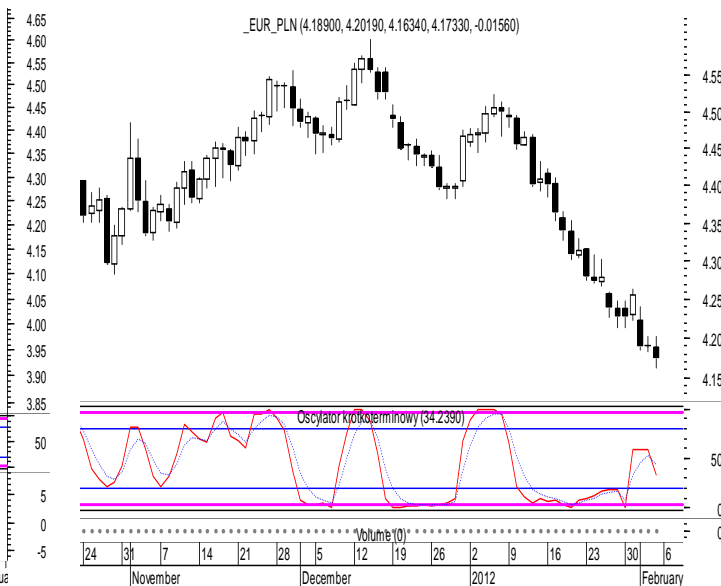
ROPA



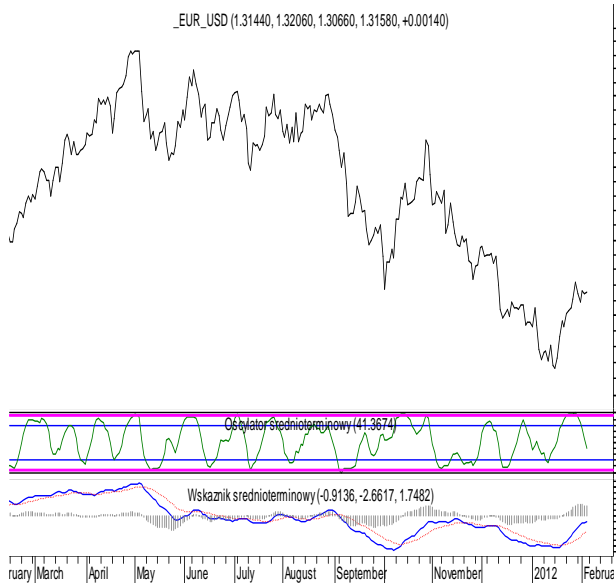
USD/PLN



EUR/PLN



EUR/USD



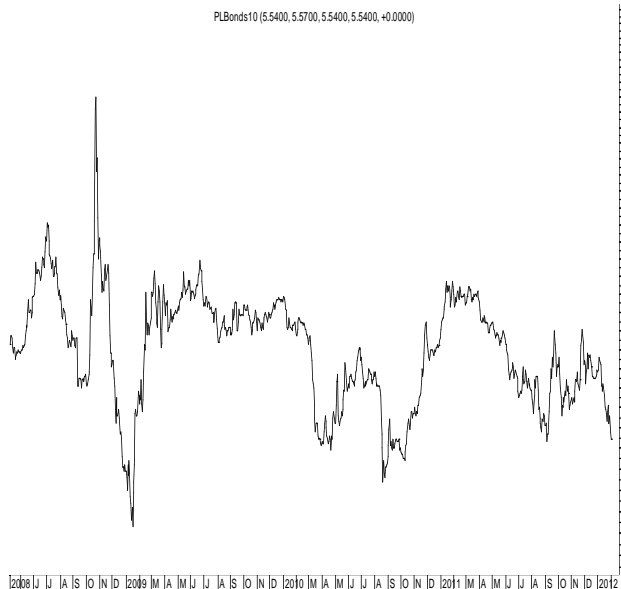
Rentowność 10-letnich obligacji amerykańskich



Rentowność 10-letnich obligacji niemieckich



Rentowność 10-letnich obligacji polskich





DJIA - Dow Jones Industrial Average Index

S&P 500 - Standard and Poor's 500 Index

NASDAQ - NASDAQ Composite Index

DAX - German Stock Index of 30 selected blue chip stocks traded on the Frankfurt Stock Exchange

CAC 40 - Cotation Assistee en Continu - index of 40 companies listed on the Paris Bourse

FTSE 100 - Financial Times Stock Exchange 100-Share Index

WIG 20 - Warsaw Stock Exchange Index of 20 blue chip stocks

BUX - Budapest Stock Exchange Index

PX 50 - Index of 50 companies listed on the Prague Stock Exchange

SOFIX - Bulgarian Stock Exchange Index

BET10 - Official index of Bucharest Stock Exchange

RTX - Russian *Traded* Index

ISE 100 - Istanbul Stock Exchange National 100 Index

NIKKEI - Index of 225 top-rated Japanese companies

SHCOMP - The Shanghai Stock Price Index

BETELES - Bloomberg Europe Telecommunication Services Index

MIEDŹ - LME COPPER 3MO (\$)

ROPA - Bloomberg European Dated Brent Crude Oil Spot Price

USBonds10 - US Generic Government Bonds 10 Year Yield

GRBonds10 - German Generic Government Bonds 10 Year Yield

PLBonds10 - Polish Generic Government Bonds 10 Year Yield
